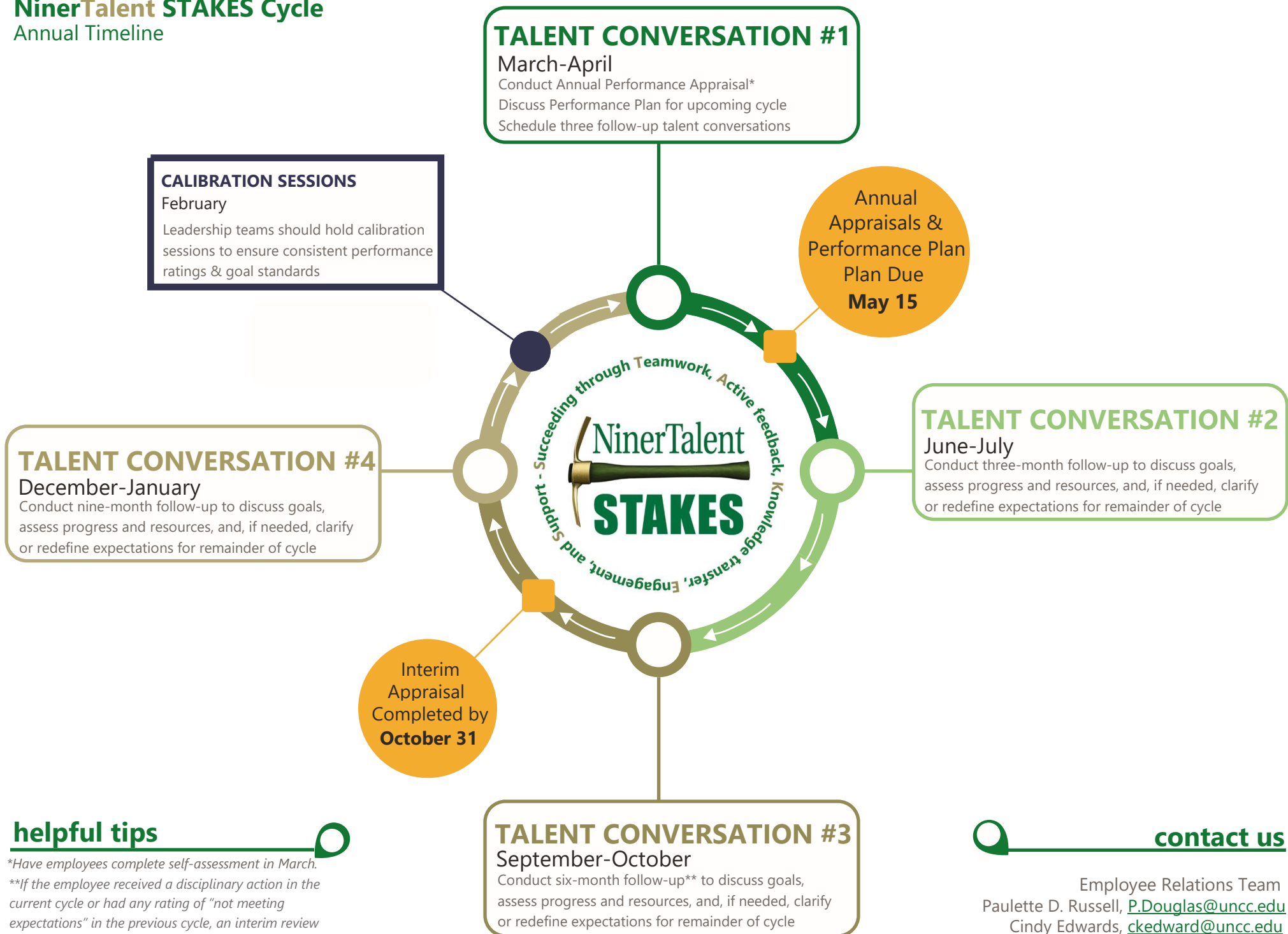


NinerTalent STAKES Cycle

Annual Timeline



helpful tips

*Have employees complete self-assessment in March.

**If the employee received a disciplinary action in the current cycle or had any rating of "not meeting expectations" in the previous cycle, an interim review is required.

contact us

Employee Relations Team
Paulette D. Russell, P.Douglas@uncc.edu
Cindy Edwards, ckedward@uncc.edu